

Sri Sivasubramaniya Nadar College of Engineering, Kalavakkam – 603 110
(An Autonomous Institution, Affiliated to Anna University, Chennai)

NAAC Appeal for Metric 7.1.2

7.1.2

The Institution has facilities for alternate sources of energy and energy conservation measures

1. **Solar energy**
2. Biogas plant
3. **Wheeling to the Grid**
4. **Sensor-based energy conservation**
5. **Use of LED bulbs/ power efficient equipment**
6. Windmill or any other clean green energy

HEI Answer before DVV Verification:

HEI Input: A. Any 4 or more of the above

Answer After DVV Verification:

DVV Input: B. Any 3 of the above

HEI Appeal:

We provided the Bills and data for Solar energy, Wheeling to the Grid, Sensor-based energy conservation and Use of LED bulbs/ power efficient equipment. We also provided photographic evidence for all the four.

In view of the above, HEI appeals for the revision of grade for this metric from 3 to 4.

NAAC score obtained	:	3
Score expected by HEI	:	4

The supporting documents are provided below:



SRI SIVASUBRAMANIYA NADAR COLLEGE OF ENGINEERING

(An Autonomous Institution)
Kalavakkam, Chennai – 603 110

SELF STUDY REPORT

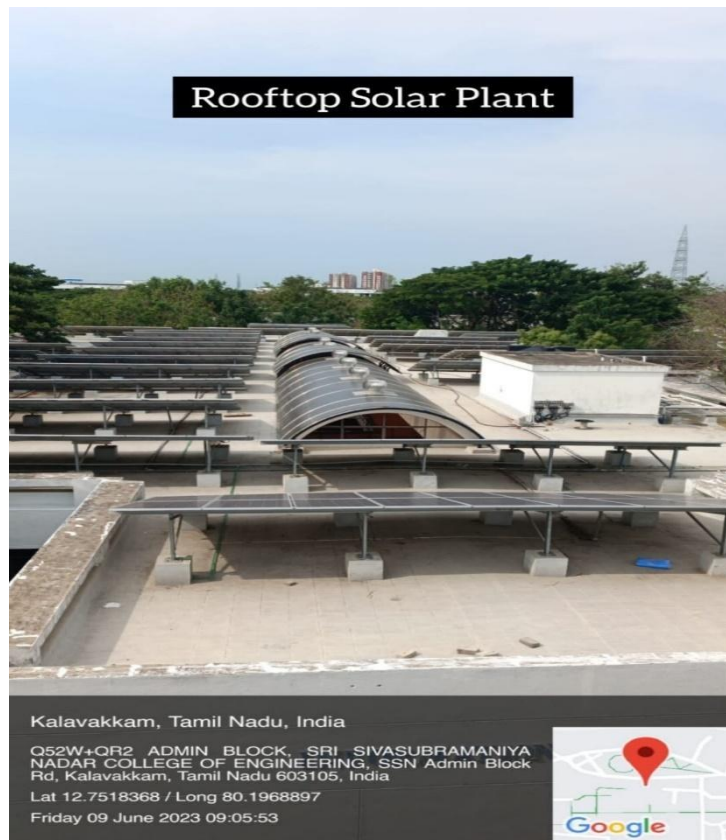
7.1.2 ALTERNATE SOURCES OF ENERGY AND ENERGY CONSERVATION MEASURES

Submitted to

The National Assessment and Accreditation Council

February 2024

1. Solar energy





3. Wheeling to the Grid (Letter Proof attached separately)

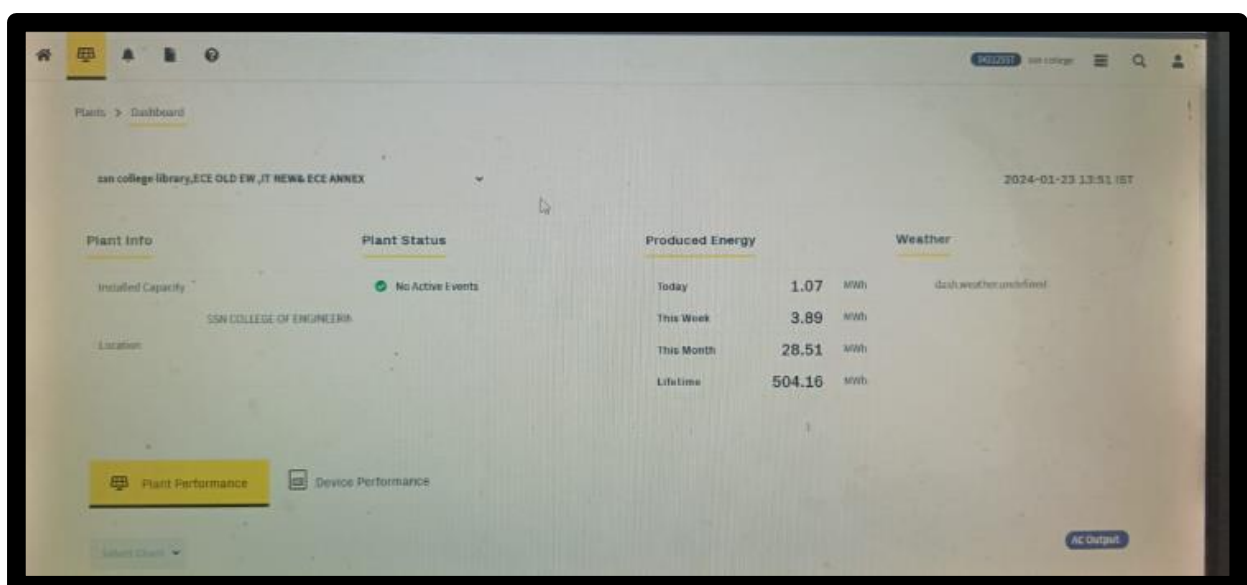
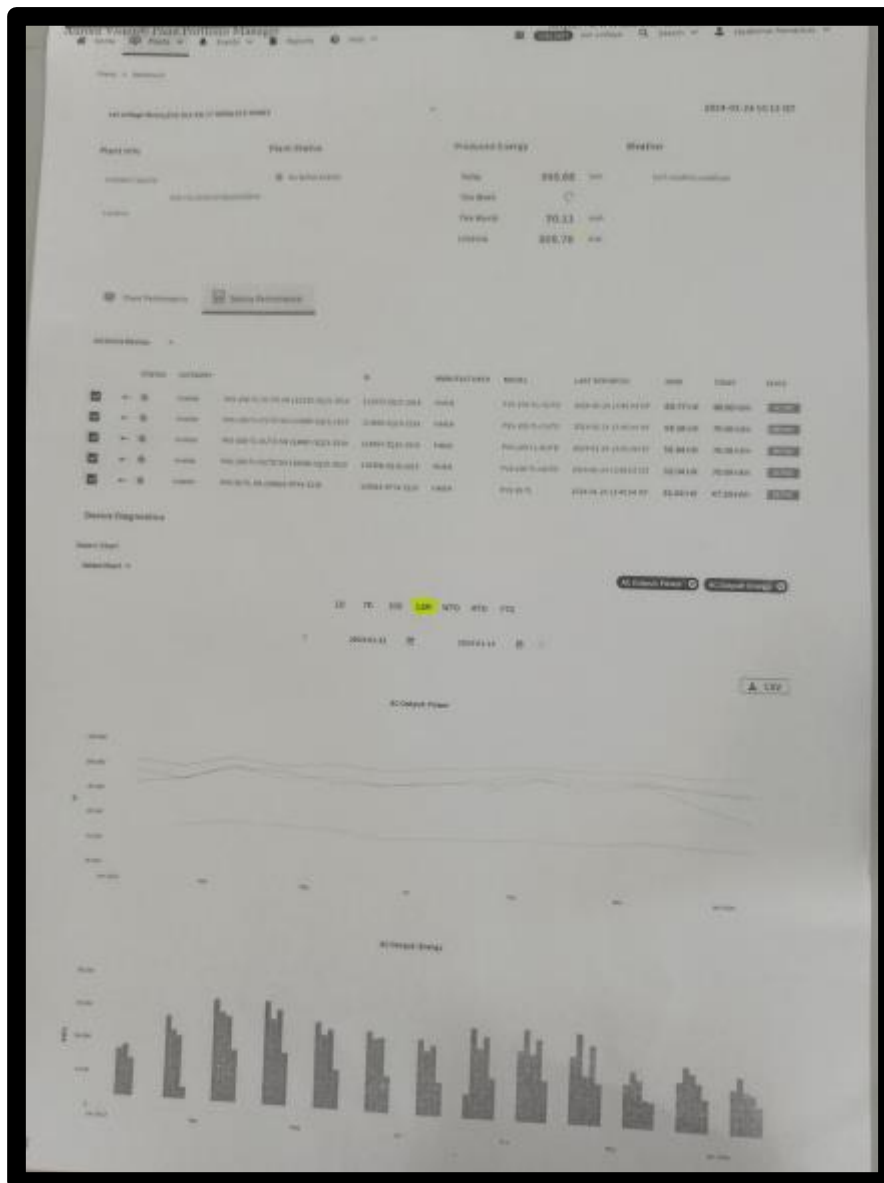
From
Er.D.Rajendran M.E,
Director – Generation,
TANGEDCO,
144, Anna Salai,
Chennai – 600 002.

To
M/s.Sri Siva Subramaniya Nadar College of Engineering
Educational And Charitable Trust,
Rajiv Gandhi Salai (OMR)
Kalavakkam – 603 110

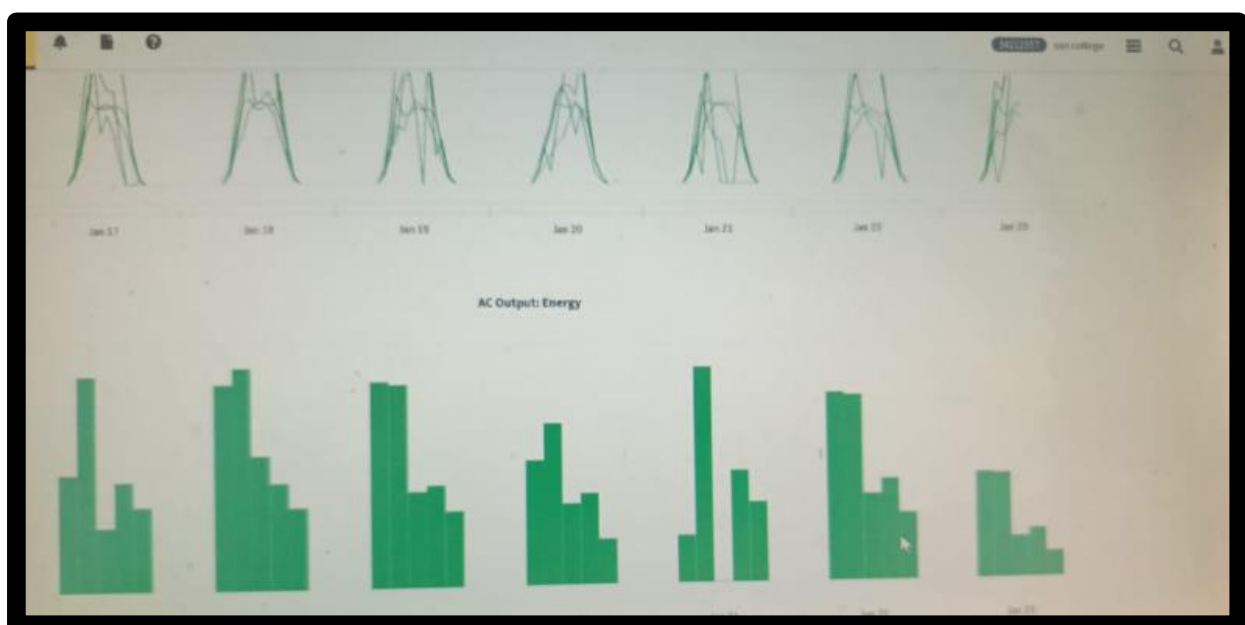
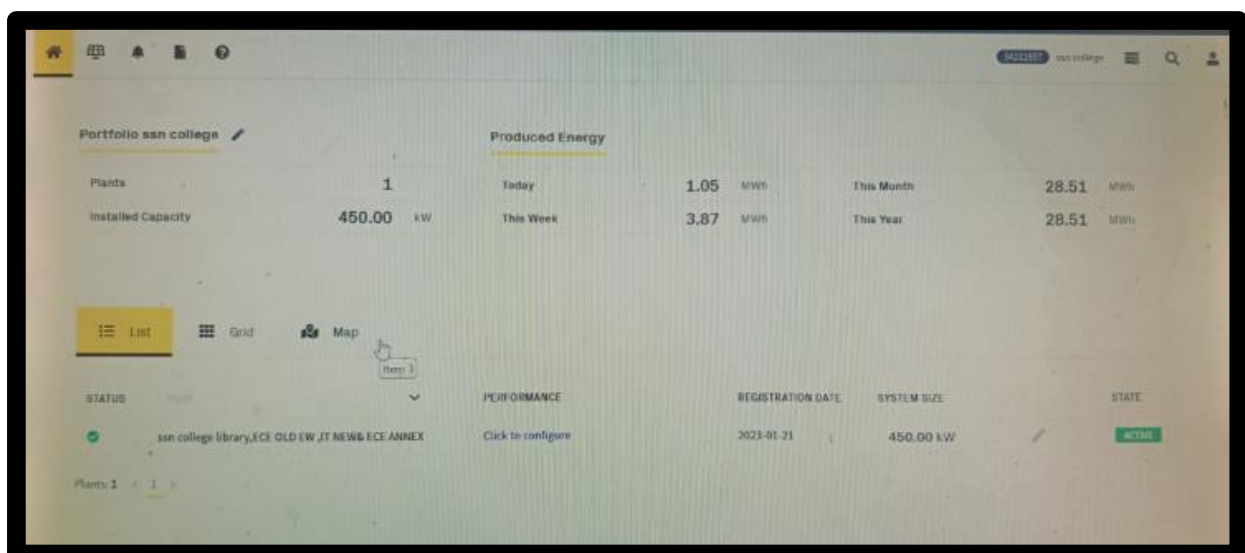
Lr.No.002375/L23/ M/s.Sri Siva Subramaniya Nadar College of Engineering-700KW/2023
dated 28.08 2023

Dear Sirs

Sub : TANGEDCO – NCES - M/s.Sri Siva Subramaniya Nadar College of Engineering–
Reg. No. RT(HQ) 332/2022-2023,dt.24.03.2023 - Establishment of 700KW over
and above existing 600KW totaling to 1300KW (AC) Restricted to 1188KW Roof
top Solar PV power plant within the HTSC premises located at Rajiv Gandhi Salai
(OMR), Kalavakkam – 603 110. Grid Interactive PV Solar Energy Generating
System (GISS) Connectivity at consumer's HT network of existing HT SC.No.
099094110329 of SE/EDC/ Chennai - Issuance of Noted for Record letter



✓	Palacode SS	Click to configure	2018-06-06	--	✎	ACTIVE
✓	RANIPET SS	Click to configure	2018-06-06	--	✎	ACTIVE
✓	SHOLINGUR SS	Click to configure	2018-06-06	--	✎	ACTIVE
✓	SSN BIOMEDICAL	Click to configure	2018-07-26	150.00 kW	✎	ACTIVE
✓	SSN CDC	Click to configure	2018-09-03	50.00 kW	✎	ACTIVE
✓	SSN CSE	Click to configure	2018-07-26	50.00 kW	✎	ACTIVE
✓	SSN CSE ANNEX	Click to configure	2022-05-06	100.00 kW	✎	ACTIVE
✓	SSN ECE	Click to configure	2018-07-26	150.00 kW	✎	ACTIVE
✓	SSN EEE	Click to configure	2018-07-26	150.00 kW	✎	ACTIVE
✓	SSN HM	Click to configure	2021-07-22	50.00 kW	✎	ACTIVE
✓	SSN IT	Click to configure	2018-07-26	50.00 kW	✎	ACTIVE
✓	SSN SOM	Click to configure	2021-07-22	100.00 kW	✎	ACTIVE
✓	Thirupathur SS	Click to configure	2018-05-23	--	✎	ACTIVE
✓	VANITYAMBADI SS	Click to configure	2018-08-06	--	✎	ACTIVE



3. Sensor Based Energy Conservations

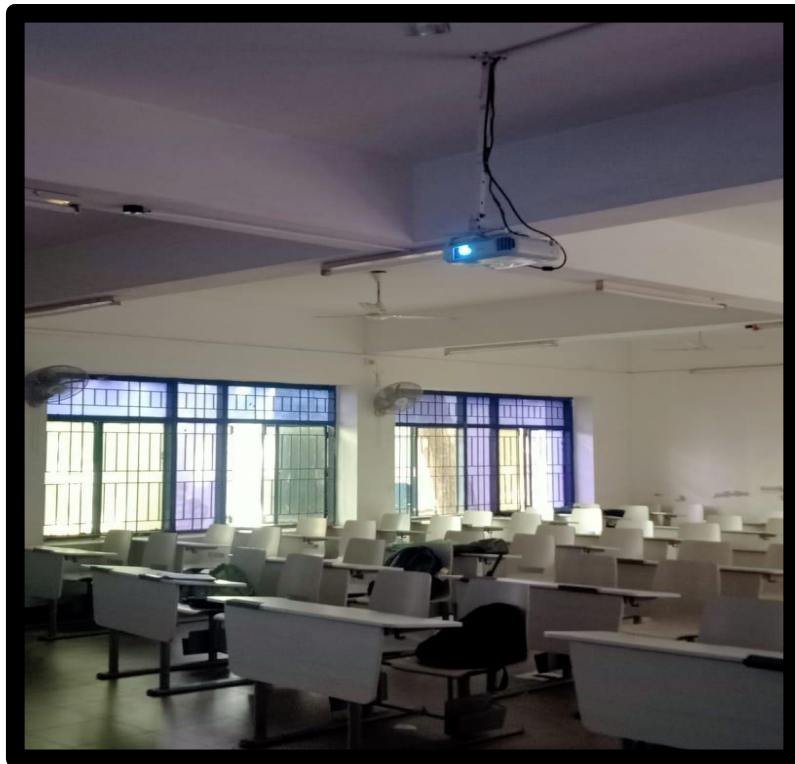
Smart Door Lock-Auto Power Off System

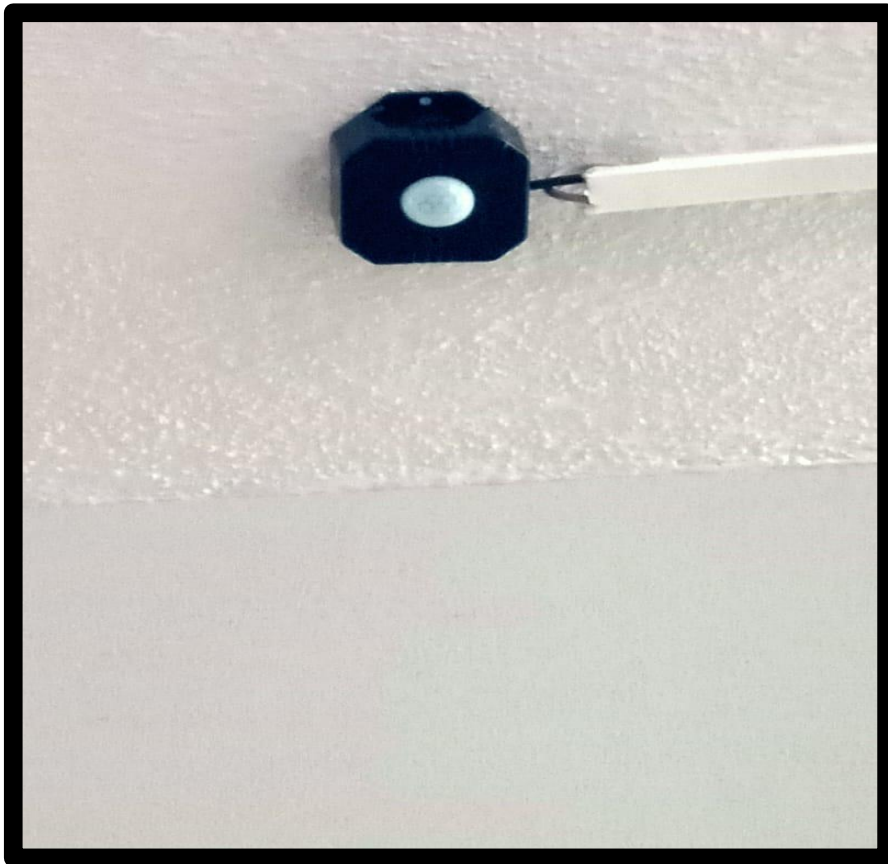
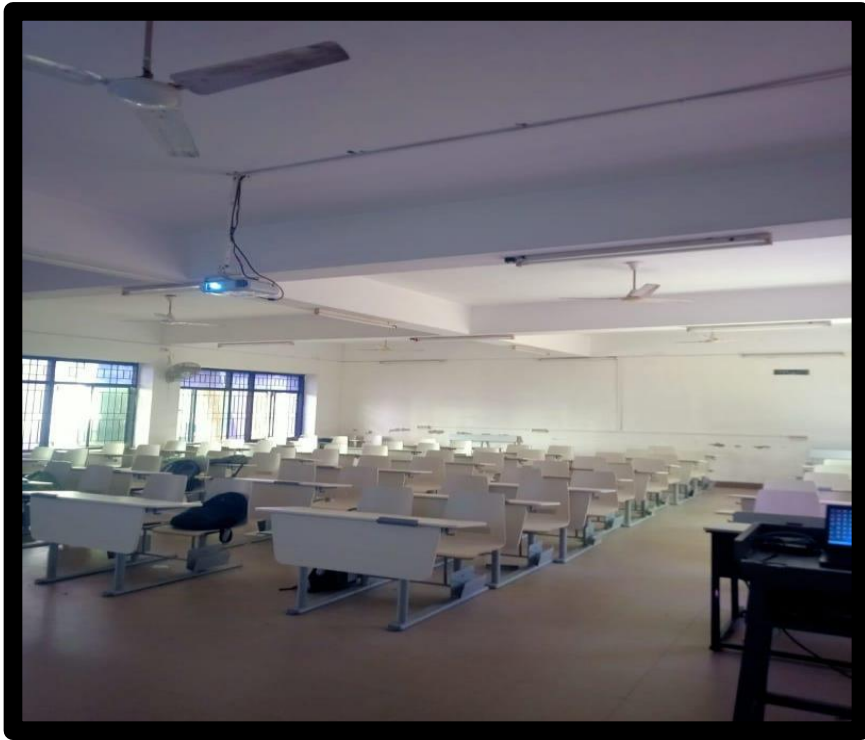


Smart Door Lock-Auto Power Off System



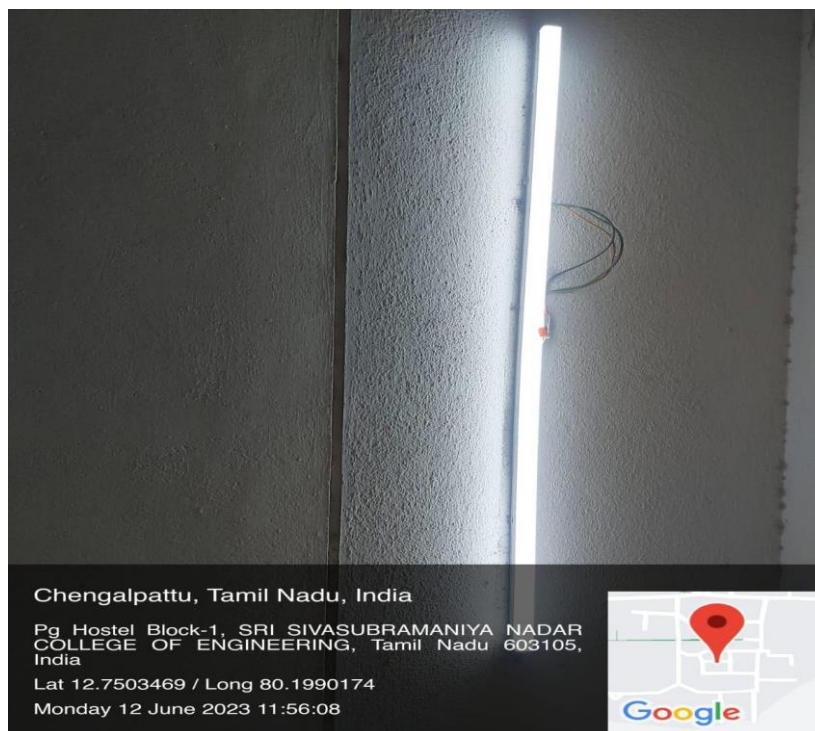
Energy saving sensors and motion-based control in class rooms



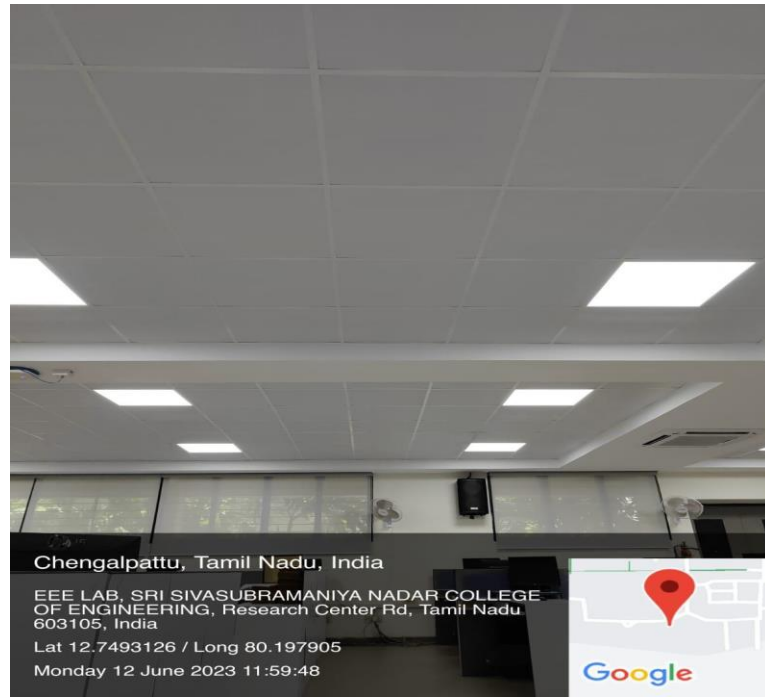




4. Use of LED bulbs/ power-efficient equipment







Chengalpattu, Tamil Nadu, India

EEE LAB, SRI SIVASUBRAMANIYA NADAR COLLEGE
OF ENGINEERING, Research Center Rd, Tamil Nadu,
603105, India

Lat 12.7493126 / Long 80.197905

Monday 12 June 2023 11:59:48

